



FOUNTAINLINE

Line Markers & Liquids

PROLINE DnG

LINE MARKER



Australian
Manufactured

The ProLine DnG is the most advanced, easy to use line marker on the market, producing even sharper, brighter lines than ever before!

Setting Up Your New FountainLine ProLine DnG Line Marker

Congratulations!

FountainLine would like to congratulate you on your decision to purchase Australia's most recognised and trusted brand of sports field line marker. We trust that you will be completely satisfied with your new ProLine DnG and its advanced design features, making it the most versatile, reliable and easiest line marker you will ever use!

Setting Up

1. Loosen off handle locking screws and slide handle into vertical handle support tubes, set to desired height and lock screws into position. Plug in switch wire.



2. Slide the marking disc assembly into position on the slide rail on the front of the marker, locking the screw in the desired position. Adjust marking discs to appropriate width and lock screws.



3. *Optional* Use foot or hand to tilt marking disc assembly upwards to activate lock. This feature will lock the marking discs off the ground to avoid leaving paint trails.



4. Fit the nozzle arm onto the marking disc frame and lock screw. Set nozzle to correct height to achieve the desired line width.



5. Lift the front cover and install delivery line system by passing spiral hose through front cover then connecting spiral hose to pump outlet. Connect the wires to the terminal block by inserting the red wire into the hole under the red clip, and the black wire in the hole under the blue clip. Close the clips to lock the wire in.



6. Insert the end of the spiral hose into the pump, and the other end into the connection located at the top of the nozzle arm.



7. Ensure the battery is completely charged by plugging in the charger located in the battery compartment.



For Ready To Use (RTU) paint:

8. Install cradle, making sure back tabs are under the frame.



Directions For Use- Ready To Use Paint & Concentrate

For Ready To Use (RTU) paint:

1. Thoroughly shake RTU paint drum and place into cradle.



2. Plug suction spear hose into FastClean™ system. Insert suction spear into RTU paint drum and screw the lid. Make sure the FastClean™ valve is turned to 'Spray'.



3. Open the ball valve and switch the line marker on for approximately 5 seconds to allow the paint solution to pump through, removing trapped air & priming the pump.



4. Close the ball valve to allow paint solution to pass through solenoid valve and nozzle.



5. After line marking is completed, clean the delivery system by inserting the suction spear into a clean drum of water and switching on the pump until clean water is spraying out of the nozzle (approx. 2-3 minutes).

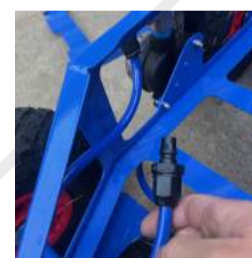


For Concentrate paint:

1. Remove RTU cradle and insert 30L tank.



2. Plug the concentrate hose into FastClean™ system and plug it into 30L tank. Make sure to check the FastClean™ valve is turned to 'Spray'.

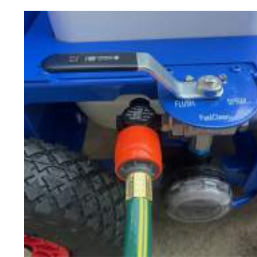


3. Pour water into 30L tank, then add your desired ratio of paint and stir thoroughly, ensuring all paint and water is mixed.



Repeat step 5 & 6 from RTU Section.

7. After line marking is completed, clean the delivery system by plugging a standard garden hose into the quick connect fitting of the FastClean™ system and turn handle on the FastClean™ valve to 'Flush'. Turn on hose and switch on the pump until clean water is spraying out of the nozzle (approx. 1-2 minutes).



8. Turn off the pump and disconnect garden hose. Pack away for next use.

Troubleshooting and Maintenance Guide



SCAN FOR ASSEMBLY & INSTRUCTION VIDEOS

IMPORTANT NOTE: Please ensure the FastClean™ lever is left on 'Flush' after cleaning to avoid paint entering the discharge system, causing possible damage to the pump.

Recommendations




1. The battery is a deep cycle battery and needs to be charging at all times when not in use.
2. Clean paint tank out if line marking not required for more than 1 week.
3. Use genuine recommended marking liquids – this will prolong the life of the line marker and maintain your 10 year warranty.
4. Always use FountainLine spare parts to maintain warranty.
5. Remove FastClean™ filter and rinse with hot water monthly.
6. Clean the nozzle with a soft bristle tooth brush when required. DO NOT use metal or sharp objects.

PROBLEM	CAUSE	SOLUTION
ProLine DnG Line Marker is not switching on	Flat Battery	Charge battery and check lights appear
	Blown fuse	Replace fuse
	Damaged "On/Off" switch	Replace switch
	Loose wiring terminals at pump, switch or inside battery box	Check and secure loose terminals
	Worn pump	Replace pump unit
The line width is not achievable	Battery charge low	Charge battery
	Nozzle tip worn or damaged	Replace nozzle tip
	Liquid dilution too thick - incorrect paint	Ensure dilution at recommended rates, Use Fountainline paint
	Blocked delivery line system	Ensure cleaned out and flushed correctly
	Low pressure	Replace check valve in pump
	Low pressure using Athletic Boom	Ensure Hi-Flo pump is installed
ProLine DnG Line marker turns on but there is no or low liquid flow	FastClean™ valve set to 'Flush'	Set FastClean™ valve to 'Spray'
	Low Battery Charge	Recharge battery
	Blocked nozzle	Clean nozzle with soft brush and water
	Liquid in tank too low	Refill tank with diluted liquid
	FastClean™ Filter located on side of machine blocked	Ensure filter is clean
	Air in system	Loosen diaphragm cap and allow air to bleed out (be careful not to lose seal) OR open ball valve on nozzle arm to release air
	Blockage in line	Remove the nozzle, connect to hose, set to 'Flush' and turn on

Key Spare Parts

				
Check Valve	FastClean™ Filter	Pump	DuraFlow Nozzle	Switch
LLM4-301	LLM4-16	LLM4-30SF	LLM4-244	LLM4-41

RTU Nozzle Application

Nozzle Colour	No of Field/ Drum	Application Type
 RED	3 to 4	Light Over Marking
 WHITE	2 to 3	Heavy Over Marking
 PURPLE	1.5 to 2	Initial Marking



A division of Machine Technology Pty Ltd ABN 79 003 244 942

3 Production Ave. Kogarah NSW 2217 Australia

Phone: +61 2 9587 0232 Fax: +61 2 9587 8443 Email: sales@fountainline.com.au

fountainline.com.au

The Choice of Champions for Over 70 Years

